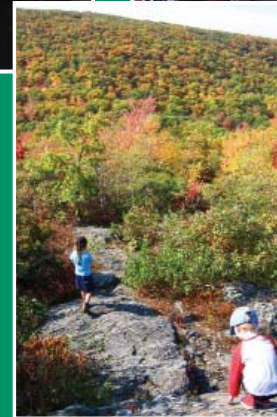
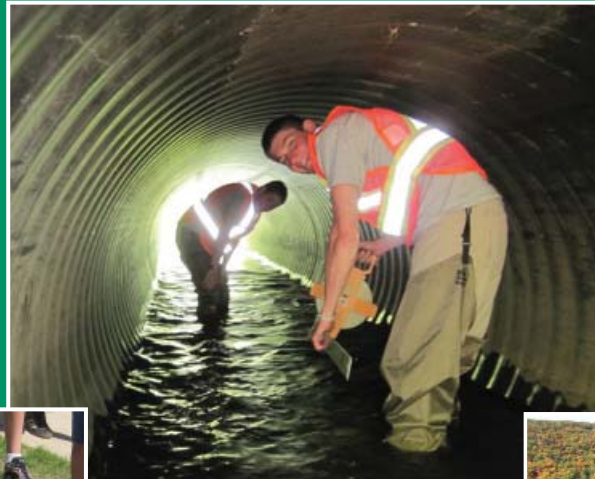




HOUSATONIC VALLEY ASSOCIATION

2016 ANNUAL REPORT

Celebrating 75 years – with you!





HVA's 25th anniversary auction broke all records as the community turned out to honor auction founder and environmental leader Diane von Furstenberg.

Board of Directors

President

F. Anthony Zunino

Vice Presidents

George Logan

Secretary

Barton Jones

Treasurer

James H. Maloney

- Linda Allard
- Christine Baranski
- Joseph Ellis
- Peter Greenoughj*
- Ecton Manning
- Michael M. Nesbitt
- Barclay Prindle

Honorary Members

- Allan L. Frew
- Diane von Furstenberg

Advisory Council

- Leendert DeJong
- David Dolinsky
- W. Paul Dooley
- Shep Evans
- Christopher Kukk, Ph.d
- David Platt
- Harmon Smith
- Steven J. Whitman

*With thanks to Peter for his service before leaving the board in June,

ALL PHOTOS FROM HVA FILES EXCEPT WHERE NOTED

TO MEMBERS AND FRIENDS

We can't say it enough – thank you!

You are the heart and soul of this great River Valley. For 75 years, the passion of our members and friends has poured through the western hills of the Berkshires and trout streams of the Harlem Valley's Ten Mile Watershed, across the fields and forests of the Litchfield Hills to the oyster beds of Milford and Stratford.

You restore rivers, teach children and protect natural places. Because of you, town road crews and leaders are working with university scientists to find and fix stream-blocking culverts. Conservationists are collaborating, and saving large tracts of our remaining forests. Young adults are gaining hands-on land and water stewardship experience and essential job skills.

Facing the challenges ahead – stressed fresh water systems, shrinking forest habitat, increasing demands on precious and finite water supplies – we know that it is you, our members and friends, who balance the odds.

You make success possible! Imagine what this river valley would be without you. On behalf of the staff and board at HVA, thank you!



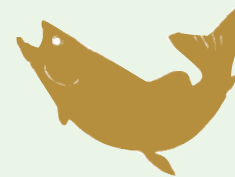
F. Anthony Zunino
F. Anthony Zunino, President



Lynn Werner
Lynn Werner, Executive Director

Special Thanks to our Corporate Associates

- Advanced Multifamily Security Systems, Inc.
- Aqua Environmental Lab
- Aquarion Water Company
- B & L Construction, Inc.
- Becton-Dickinson Co.
- Bennett Sullivan Associates
- Berkshire Bank Foundation, Inc.
- Bovvier Insurance
- C.H. Nickerson & Co., Inc.
- Center Subaru
- Connecticut Institute for Communities, Inc.
- Crystal Rock LLC
- Dixon Golf, Inc.
- DSA Companies
- Fairfield Processing Corp.
- FirstLight Power Resources, Inc., subsidiary of GDF Suez N.A
- Foresight Land Services, Inc.
- Price Chopper's Golub Foundation
- Greylock Federal Credit Union
- Harney & Sons Fine Teas
- Harper Haines Fluid Control, Inc.
- Heritage Development Group, Inc.
- Iroquois Gas Transmission System
- Kimberly-Clark Corporation
- Litchfield Bancorp
- National Iron Bank
- O'Connor Davies, LLP
- Pawling Engineered Products, Inc.
- Phoenix Realty Management
- The Platt Brothers & Co.
- Precision Resource, Inc.
- R.H. White Construction Company
- Rotary Club of Derby-Shelton, Inc.
- Salisbury Bank & Trust
- The Stephen B. Church Co.
- The Stone Construction Co., Inc.
- Tata & Howard, Inc.
- Tighe & Bond
- Union Savings Bank
- Upper Housatonic Valley National Heritage Area
- Zuberry Associates



www.hvatoday.org

FOCUS ON WATER



You protect clean water and healthy rivers!

You restore water quality

The new Still River Watershed Partnership aims to restore the Still, one of our most polluted rivers, to fishable, swimmable condition. Partners are mapping sources of pollution and identifying restoration opportunities, wildlife and recreation sites across all seven watershed towns in the greater Danbury region; the report should be ready this winter! (see www.stillriverwatershed.org for more).

You also ...

- Create New York's Ten Mile Watershed Partnership among town leaders and organizations to improve stream health, water quality and recreation, and reduce flooding throughout the ten-town watershed.
- Pass legislation designating the Housatonic River as Wild and Scenic from North Canaan to New Milford with the Housatonic River Commission, Northwest CT Council of Governments, Rivers Alliance and other great partners!
- Build trout refuges in Cornwall Bridge's Furnace Brook with the Housatonic Fly Fisherman's Association.
- Monitor water quality at storm drains across Pittsfield, and maintain rain gardens to improve water quality along city sidewalks.

- Expand watershed work to the Pootatuck River with the Pootatuck River Watershed Association and Candlewood Valley Trout Unlimited.
- Find more barriers to water flow and fish and wildlife movement at stream crossing culverts working with town leaders, UCONN, the Berkshire Environmental Action Team and the Farmington River Watershed Association! Of the 2,000 assessed so far across the northwest Hills, throughout the Berkshires and south into Seymour, more than half are impediments to fish and wildlife passage and can pose flood risks.
- Evaluate "Rest of River" PCB remediation.

And you help ...

- Organize fabulous river cleanups and paddle trips across the watershed.
- Install a new river access dock in Stockbridge, and continue work on access sites in Great Barrington, Pittsfield, West Cornwall, Kent and New Milford.

By year's end, we were working with town leaders to prioritize culverts for replacement to enable fish and wildlife to move safely and trout to return home to spawn, and reduce costly flood damage, too.

Special Thanks to our Project Sponsors

Donald and Elizabeth Abbott
Bernard Adams and Edna H. Travis
Advanced Multifamily
Security Systems, Inc.
Linda Allard
Angry Beavers Paddle Club
Anonymous
B & L Construction, Inc.
Christine Baranski
Becton-Dickinson Co.
Bennett Sullivan Associates
Berkshire Bank Foundation, Inc.
Berkshire Environmental Action Team
Berkshire Environmental Endowment Fund
Berkshire Taconic Community Foundation
Big-Y Supermarkets
Scott and Roxanne Bok
Borough of Naugatuck
Bouvier Insurance
Brandeis University
Bull's Bridge Inn
Canyon Ranch
Sharon Casdin
Center Subaru
C.H. Nickerson & Co., Inc.
Darlene Clouthier
City of Derby
City of Pittsfield
Commonwealth of Massachusetts
Connecticut Audubon
Connecticut Community Foundation
Connecticut Department of Energy
and Environmental Protection
Connecticut Institute for Communities, Inc.
Cornwall Conservation Trust
Cornwall Consolidated School

Continued on Page 5



Berkshire Director Dennis Regan with the newly completed floating dock river access in Stockbridge.

IN MEMORIAM

We lost two dear friends this year. We miss them every day.



Ellen Rosenberg passed away in May. Ellen served on HVA's board for

23 years, most recently as vice-president. As a retired professor of anthropology at Western Connecticut State University, she brought wisdom to our climate change and river restoration work, especially in urban areas such as her beloved Still River watershed. Ellen was an early and passionate voice for collaborating with tributary groups and land trusts across the watershed, now a fundamental part of all we do.



Einar Lindholm passed away in January, leaving a four-decade legacy of

environmental leadership with HVA and area organizations. A retired architect who designed in cities and towns from Boston to Washington DC., Einar served as HVA's president in the 1990's. He led HVA through turbulent times on the Housatonic River, determined to resolve hydropower relicensing and PCB clean up issues. Einar listened, reflected, moved forward – and succeeded.

FOCUS ON LAND



BILL WAKELEY PHOTO

Appalachian Trail in Falls Village looking into the southern Berkshires

You protect spectacular landscapes along the Housatonic River by ...

- Bringing together community trail leaders to share ideas about conserving and linking riverfront land, and...
- Producing a Trail Map and Guide to Housatonic Riverfront trails and protected areas from Hinsdale and Dalton south into Kent, Connecticut.

... and Greenprinting the Litchfield Hills

The Litchfield Hills Greenprint Collaborative is working to protect large swaths of our most important landscapes before it is too late. Unfragmented forests provide vital wildlife habitat and replenish streams and wells with cold, clean water (<http://litchfieldgreenprint.org>).

- You enabled the Greenprint to help two of its own – the Cornwall Conservation Trust and the Goshen Land Trust – protect two amazing properties totaling 442 acres. The Cornwall property completes a 1,000-acre swath of conserved land along the Housatonic River. The Goshen land links another 1,000-acre path abutting Canaan Mountain and the Torrington Water Company. Both deals were helped by \$400,000 donations through the Greenprint Partners Pledge Fund, which

matches private individuals and family foundations with land protection projects of regional conservation significance.

- Tapping remaining funds in the Greenprint Landowner Incentive Fund (launched with a grant from the Jessie B. Cox Foundation last year), Greenprint member land trusts completed projects totaling 1,400 acres in Norfolk, Colebrook, Winchester, Kent, New Hartford and New Milford. The Incentive Fund covers costs incurred by land trusts accepting donated or deeply discounted sales of land or easements.

And you helped ...

- Protect a sensitive wetland next to the Amenia Town Hall.
- Evaluate the impact of a cell tower on conserved and recreation lands and streams in Wassaic, New York and Kent, Connecticut.

At year's end, we were evaluating development impacts in several communities and working with multiple landowners and land trust partners to attract \$10 million in public and private funding needed to preserve more than 1,500 acres across 12 northwest Connecticut communities containing critical forest habitat and sources of clean fresh water.

FOCUS ON EDUCATION



You connect youngsters to nature!



“I love your manner with the students! Your presentations are extremely well suited to the new Massachusetts Science and Tech standards. I also look forward to collaborating

next year. The models you brought really helped to bring life to the topic for the kids.”

— Lynn McDonnell

Lynn, a fourth grade teacher at Crosby Elementary School in Pittsfield, loves our Berkshire school programming and HVA educator Alison Dixon. This year nearly 400 students across the Berkshires, from pre-school to high school, stencilled storm drains, sampled water quality, explored watershed dynamics and had fun splashing in streams. You make it happen!

And this year we also celebrated our 75th Anniversary with hundreds of families and children from the Berkshires to Long Island Sound during the great Housatonic River Source-to-Sound Paddle Adventure!

You also make it possible to:

- Host the annual Still River Day for 100 fourth grade students in Danbury to explore

water quality, river critters and wildlife, and have fun, too!

- Launch Still River Watershed Connections – our new youth program with Danbury Youth Services and Danbury High School that connects students with environmental restoration projects and essential job training and skills in the greater Danbury Area.
- Share information about stormwater pollution and other river issues and solutions at town fairs across the Berkshires.
- Teach Pittsfield residents and volunteer teams about how to prevent stormwater pollution and take care of city sidewalk rain gardens.
- Help Dover High students implement the Wells Brook Stream Restoration Project assessing water quality, sampling aquatic insects, monitoring stream conditions and identifying restoration opportunities.
- Expand the RiverSmart Campaign to reduce polluted runoff with LakeSmart and SwampSmart led by dozens of partnering organizations.

At year’s end, we were planning to launch a new, interactive web-based program to enable partners, schools, community leaders, residents and visitors to protect this special watershed.

Special Thanks to our Project Sponsors

Crystal Rock, LLC
David L. Klein Jr. Foundation
Frank Delaney
David and Sandy Dolinsky
Leslie Elias
Joseph and Barbara Ellis
Elson-Slemmer Fund for the Environment
Environmental Professionals’ Organization of Connecticut
Eversource Energy
David Faber
Fairfield County’s Community Foundation
The Falls Village Inn
Fields Pond Foundation, Inc.
Firstlight Power Resources, Inc.,
Subsidiary of GDF Suez N.A.
Katherine Freygang
Friends of Dover
Golub Corporation
Peter W. Greenough and
Christine Bates
Greylock Federal Credit Union
Grumbling Gryphons
Guido’s Supermarket
Lazlo Gyorsok
Harper Haines Fluid Control, Inc.
Louis and Elaine Hecht
Heritage Development Group, Inc.
Highstead Foundation, Inc.
Edward and Megg Hoffman
Honeywell International Corporation
Ion Bank Foundation
Hughes Memorial Library
Iroquois Gas Transmission System
Jeniam Foundation
Jessie B. Cox Charitable Lead Trust
John T. & Jane A. Wiederhould Foundation
Barton and Debby Jones
Peter Kellogg
Kent School
Kent Center School
Kimberly-Clark Corporation
Charles Lay
Lignin Group, LLC
Einar and Patience Lindholm
Litchfield Bancorp
George and Lisa Logan
James H. Maloney, Esq.
Ecton and Betsy Manning
Marcia Brady Tucker Foundation
Massachusetts Executive Office of Energy and Environmental Affairs
James and Eileen McInerney
Millbrook Garden Club
Mits, Inc.
Libby Mitchell
William F. and Sue Morrill
National Audubon Society, Inc.
National Fish and Wildlife Foundation
National Iron Bank
National Oceanic and Atmospheric Administration (NRD Trustees)

Continued on Page 6

Special Thanks to our Project Sponsors

Natural Resources Damages Fund
Natural Resource Trustees
Naugatuck Valley Outdoors Club
Michael Meehan and Martha Nesbitt
New Haven Rowing Club
New Milford Stop & Shop
New Milford Recreation Association
Northwest Connecticut Community
Foundation
Northwest Lawn and Landscaping
Maintenance, LLC
O'Connor Davies, LLP
Onyx Specialty Paper, Inc.
Open Space Institute
Oppenheimer Environmental Fund
Phoenix Realty Management
Pitney Bowes
Price Chopper's Golub Foundation
Barclay Prindle and Amy Schuchat
Emily Pryor
Red Lion Inn
R.H. White Construction Company Rivers
Alliance of Connecticut, Inc.
Robbins-de Beaumont Foundation
Ellen M. Rosenberg
Rotary Club of Derby-Shelton, Inc.
Rotary Club of New Milford
Royal Bank of Canada
Joe Ruggiero
S. L. Gimbel Foundation Fund
Salisbury Bank & Trust
Sharon Audubon
Sharon Center School
Lucas Sheridan
Siemon Company
David Sinish
The Stephen B. Church Co.
The Stone Construction Co., Inc.
Stop & Shop
Tata & Howard, Inc.
TD Charitable Foundation
Schuyler Thomson
Tighe & Bond
Town of Cornwall
Town of Great Barrington
Town of Lee
Town of Stockbridge
Trout Unlimited – Connecticut Chapter
Gay Tucker
U.S. Fish and Wildlife Service
Union Savings Bank
Upper Housatonic Valley National
Heritage Area
Valley Community Foundation
Royal Victor, III
Eliot and Annick Wadsworth
Wandering Moose Cafe
Laura Wertz
Werth Family Foundation
Wesson Energy, Inc.
Zubery Associates
F. Anthony and Sally A. Zunino

Angry Beavers Paddling Club
Appalachian Mountain Club, Berkshire
and Conn. Chapters
Aton Forest, Inc.
Berkshire Community College
Berkshire County League of Sportsmen
Berkshire Environmental Action Team
Berkshire Hatchery Foundation
Berkshire Litchfield Environmental
Council
Berkshire Museum
Berkshire Natural Resources Council
Berkshire Regional Planning Commission
Big Y Supermarkets
Candlewood Lake Authority
Center for Watershed Protection
City of Ansonia
City of Danbury
City of Derby
City of Pittsfield
City of Shelton
Colebrook Land Conservancy
Columbia Land Conservancy
Commonwealth of Massachusetts
Department of Ecological Restoration
Connecticut Audubon
Connecticut Department of Energy and
Environmental Protection
Connecticut Farmland Trust
Connecticut Forest and Park Association
Connecticut Fund for the Environment
Connecticut Land Conservation Council
Connecticut League of Conservation
Voters
Connecticut River Watershed Council,
Inc.
Cornell Cooperative Extension –
Dutchess County
Cornwall Conservation Trust
Crystal Rock, LLC
Danbury High School
Danbury Youth Services
Dover Plaza
Dutchess County Parks
Dutchess County SWCD
Dutchess Land Conservancy
EarthShare
Eversource Energy
Fairfield County RCP
The Falls Village Inn
Farmington River Watershed Association
Flanders Nature Center and Land Trust
Foresight Land Services Engineering Co.
Friends of the Great Swamp
Friends of the Lake
Global Impact
Goshen Land Trust
Great Barrington Trails & Greenways
Guido's Supermarket
Harlem Valley Rail Trail Association
Hartland Land Trust
Heritage Land Preservation Trust
Highstead Foundation, Inc.

Housatonic Fly Fishermen's Association
Housatonic River Commission
Housatonic Valley Council of Elected
Officials
Housatonic Valley Regional High School
Kent Energy and Environmental Task
Force
Kent Land Trust
Lake Waramaug Task Force
Land Trust Alliance
Land Trust of Danbury
Charles Lay
Litchfield Land Trust
Massachusetts Audubon Society
Massachusetts Department of Fish &
Wildlife
Massachusetts Department of
Environmental Restoration
Massachusetts Rivers Alliance
Massachusetts Watershed Coalition
Merchants of New Preston Village
Miss Hall's School
Morris Land Trust
Naromi Land Trust
National Fish and Wildlife Foundation
National Oceanic and Atmospheric
Administration
National Park Service
The Nature Conservancy
Naugatuck River Revival Group
Naugatuck Valley Council of
Governments
Naugatuck Valley Outdoors Club
New England State Foresters Association
New Hartford Land Trust
New Milford Recreation Association
New Milford Stop & Shop
New York State Office of Parks,
Recreation and Historic Preservation
Norfolk Land Trust
North Atlantic Aquatic Connectivity
Collaborative
Northwest Connecticut Conservation
District
Northwest Landscapes
Oblong Land Conservancy
Park Avenue Elementary School
Pittsfield High School
Pomperaug River Watershed Coalition
Pontoosuc Lake Association
Princeton Hydro
Project Native
Regional Land Conservation (RCP)
Network
Rennia Engineering
Rivers Alliance of Connecticut
Rotary Club of New Milford
Joseph Ruggiero
Salisbury Association Land Trust
Sharon Audubon
Sharon Land Trust
Sheffield Land Trust
Shepaug River Association

Sierra Club – Connecticut Chapter
David Sinish
Steep Rock Association
Still River Alliance Commission
Stockbridge Bowl Association
Schuyler Thomson
The Trust for Public Land
Town of America
Town of Bethel
Town of Brookfield
Town of Canaan
Town of Colebrook
Town of Cornwall
Town of Dalton
Town of Dover
Town of Egremont
Town of Great Barrington
Town of Hinsdale
Town of Kent
Town of Lee
Town of Lenox
Town of Litchfield
Town of New Milford
Town of Newtown
Town of Norfolk
Town of North Canaan
Town of Northeast
Town of Oxford
Town of Ridgefield
Town of Salisbury
Town of Seymour
Town of Sharon
Town of Sheffield
Town of Stockbridge
Trout Unlimited – Candlewood Valley,
Conn., Taconic, Massachusetts and
National Chapters
The Trustees of Reservations
Twin Brooks Gardens
U.S. Environmental Protection Agency
U.S. Fish and Wildlife Service
United Way of Greater Waterbury
University of Connecticut Dept. of Civil
and Environmental Engineering
University of Massachusetts
Upper Housatonic Valley National
Heritage Area
USDA NRCS CT
USGS CT Water Science Center
Valley Council of Governments
Valley United Way
Village of Millerton
Warren Land Trust
Watertown Land Trust
Weantinoge Heritage Land Trust
Westchester Land Trust
Western CT Council of Governments
Westfield River Watershed Association
White Memorial Foundation
Winchester Land Trust

www.hvatoday.org



PHOTO BY HENRY S. DZIEKAN III

“Supporting HVA gives me a feeling of partnership with an organization that has a passion and history of protecting our rivers and scenic watershed lands. Nothing is more important to our quality of life and the health of future generations than the preservation of our most vital and beautiful resource, clean free flowing water.”

Jack Baker, member since 2008



Members

Gifts received from August 1, 2015 through July 31, 2016

Thank you for your generous support!

PRESIDENT'S CIRCLE

\$10,000+

Linda Allard Gallen
Anonymous
Scott L. and Roxanne Bok
Robert Couturier and
Jeffrey P. Morgan
Joseph and Barbara Ellis
Louis and Elaine Hecht
Edward and Megg Hoffman
Peter R. Kellogg
Roger and Fa Liddell
Kirsten Peckerman
Anne H. Swift and Lee Lord
Diane von Furstenberg and
Barry Diller
Elliot and Annick Wadsworth
Stephen M. Wolf
F. Anthony and Sally Auer Zunino

BLUE HERON SOCIETY

\$5,000+

Tucker and Karen Andersen
Anonymous
Scott W. Asen
Jack and Pam Baker
Larry and Martha Bingaman
Valerie Friedman and Frank Adams
Scott and Ellen Hand
Barton and Debby Jones
Ezra and Reeva Mager
Rebecca and Jim Neary*
Marguerite Purnell
Ronald and Michelle Saltz
Jean Vitalis

GREEN HERON SOCIETY

\$2,500+

Christine Baranski
Sharon Casdin
David and Sandy Dolinsky
Allan L. Frew
Thomas J. and Anne Hubbard
Robert and Jane Keiter
Ecton and Betsy Manning
William and Sue Morrill

Michael and Martha Nesbitt
Benjamin Nickoll and
Christine Armstrong
Barclay Prindle and
Amy Schuchat
L. George and Nancy Rieger
Royall Victor, III

WATERSHED GUARDIANS

\$500+

AKC Fund, Inc.
Anonymous
William T. Baker and
Bayard Gordon
Spencer J. Barksdale
Anne H. Bass
Jayne Bentzen*
Richard Berry and
Lucy Commoner
Canon Stephen Paul Booth
Andrew and Cathy Carron*
Elizabeth and Jay Chandler
Todd R. and
Kalyn Johnson Chandler
Drs. Mitchell Charap and
Karen Gilmore
Doolittle Lake Co.
Thomas P. Dore and
Maureen Kirby
Philippa Durrant and
Andrew Stathopoulos*
Anne Fredericks and
Marc Fasteau
Ronald Garfunkel and
Sandra Breakstone
Mrs. Grenville Garside
Andrea and Mary Ellen Geisser
Jonathan Glashow, M.D.
Michael Gordon
Peter W. Greenough and
Christine Bates
Kenneth L. Greif
Molly B. Hart and
Michael D. Griffin
Meryl Streep and
Donald Gummer

Susan and Murray Haber
Dena and Felda Hardymon
Mrs. Montgomery Hare
Ronald D. Jones
Pat and Paul D. Kaplan
Dr. and Mrs. Henry Kissinger
Charles D. and Jane Parsons Klein
Lewis and Sharon Korman
Rob Kuhbach and
Sherrill Andrews
Ron and Carol Kurtz
Lawton S. Lamb
Jonathan and Bonnie Landman
Sheryl Leach and
Howard Rosenfeld
Raymond J. Learys
Einar and Patience Lindholm



Paddlers in a war canoe during the Source-to-Sound paddle trip.

John D. and Sue Lynch
Liz McCarthy and Brian O'Leary
James and Eileen McInerney
Alan H. McLean
Nancy McWilliams
J. Thomas and Cynthia Mitchell
Lawrence Noe and Leslie Singer
Mrs. Charles C. Osborne
Kate Paley
Sally Gooch Paynter*
Eugene and Diana Pinover
Joseph and Emilie Pryor
Mrs. Millard Pryor
David C. Robinson and
Margaret Field
Benjamin and Donna Rosen
Bruce Rowland
Lon Rubackin
Warren Rubin and
Bernice Wollman
Beth P. Schober
Dr. William and Alison Schweizer
Gene and Lee Seidler
William and Joanna Seitz
Richard and Carol Seltzer
Daniel D. Sherr and
Margaret Ferguson
Jeffrey and Amy Silverman
Elizabeth W. Smith
Scott and Jerilyn Smith
John Van Der Tuin
Tim Wallach and Fleur Fairman*
James Worth
John and Jennifer Youngblood*

RIVER SPONSORS

\$250+

Michael P. Albert
Appalachian Mountain Club, CT
Robert Behrends, M.D.
Ralph S. and Elizabeth Brown
Edwin N. Cady
Barbara Cantacuzino
Graydon and Anna Carter
John and Anne Coffin
Anni Crofut

Michael Dennis and
Katherine Wenning*
William Donahue
Dr. David M. and
Deborah Dressler
Cheryl and Pierre Dziubina
Sally Eagle and Dan Mead
Robert T. and Betsy Eaton
Joel Ernst
Martha J. Fleischman
Henry A. and Susan Flint
Steven Fordyce and
Victor Jimenez
Marcia and Bruce Fowl*
Marvin and Rita Ginsky
Brigid K. Glackin and
Michael J. Murphy
Sherwin M. Goldman
Edward and Diana Greene
Michael Hallows and Lynn Perry
Nancy Hengen and
Henry Monaghan
Bruce Hoheb and Susan Menconi
The Interlaken Resort &
Conference Center
Daniel and Leila Javitch
Anne Kreamer
Mary and Richard Lanier
Dwight Lee and Blair Brown
Eileen and Peter Litwin
Michael and Ann Loeb
George S. and Lisa Logan
John F. Lyons*
Mr. and Mrs. Joseph Mammano
John and Ada Masiero
Kate and Joel Millonzi
Alan and Alice Model
Jacolyn Mott
New Morning Market
Rich and Jean O'Reilly*
Steven Paggioli
James and Sarah Picton
J. Rodney Pleasants and
Steve Godwin*
Madeleine and Joel Policzer
Joseph and Janet Aspen Polizzotto



“My friend Anne, her dog Toka and I walk every weekend along one of our rivers. I appreciate that HVA has made such an effort to restore them so that all of us and our children can continue to enjoy them.”

Rodney Pleasants, member since 2016



Members

Diana Hitt Potter
T. Merrill and Marie Prentice
Charles and Barbara Robinson
Stuart and Stephanie Saft
Susan Saint James
Richard B. and Bette Saltzman
Sunil Savkar
Diana Simrell Savory
Eric Schiffman
Richard Schlosberg
H. Marshall and Rae Schwarz
Susan and Jim Scott
Richard Sears and Brenda Singer
Stephen Sondheim
Stephen and Jeanette Tabb
Aso O. Tavitian
Robert G. and Audrey G. Tobin



“I would eventually like to use my education as a teacher or professor. This will allow me to inspire more people to conserve the beauty of the world we live in and to educate people in responsible ways to use and conserve our environment preserving it for this generation and future ones, so we may all enjoy the world we live in.”

— Brian Saccardi
River Steward

Lee Vance and
Cynthia King Vance
Michael and Elizabeth Varet
Ann and Larry Wagner
Abby Wells
Tom and Cynthia Willett*
Windy Hill Farm, Inc.
Willard and Susannah Wood
Roy D. and Ginny Young
Anne Zinsser
Gary and Debra Zrelak

STREAM SPONSORS \$100+

Byron Abreu
Mary M. Ackerly and
Michael Sconyers
Peter and Ellen Acly*
Michelle Schakelford and
Norman Adler
Dr. Henry C. and Elyse Allen
Drs. Lewis and Karen Altfest
James Anderson
Robert J. Anderson
Anonymous
Ansonia Rod & Gun Club
Lawrence Appel and Ellen Dunn
Arcadian Shop, Inc.
Kip and Merry Armstrong
John and Mary Arnold
William Arnold and
Stephanie Wargo
Robert Avian
Alphonse and Ruth A. Avitabile
Jane Bakker
Emmert and Alberta Balis
Skip and Judy Barber*
Leila J. Baroody
Dr. Andrew N. and Ann Bazos
Bee Tree Veterinary Clinic, LLC*
Dick Bell
Ben's Shop, Inc.
Berlinghoff Contracting, Inc.*
J. Andrew Billings and
Susan Block
C.D. Blinn
Edward and Elenor Bloom
Jeffrey and Lynne Bolson
George W. and Kathleen Bossers
Alex and Catherine Brandorff

Mr. and Mrs. Donald B. Brant, Jr.
Mary Reid Brash
Brockfield Conservation
Commission
Mark and Patricia Bruder
John and Denise Buchanan
James L. Buckley
Wheaton B. and Laura Byers
Charles and Eileen Byrne
Steven B. Callahan and
Randal R. Dwenger
Randall Carreira*
Mrs. Pat Catchpole
William G. Cavanagh
Jared Clark and Jessica Rose
Nancy G. Clark
Joyce Clateman
Darlene Clouther
Kent S. Clow, III*
Lawrence and Ronnie Cohen
Terry and Joel Cohen
J. Barclay Collins, II
James Nicoll and Mary Cooper
John Court
Barbara and Bill Cox

Creating Cadence*
John Creasy and Caroline Creasy
James W. Crowley
Charlotte Dallett
Stuart S. Daly
Nan and Richard Davis
J. Richard deBart, Jr.
Lee and Sophia deBoer
Joyce DeCesare
Leendert and Maryellen DeJong
Lawrence and
Elizabeth Dexheimer
Frank and Sandra Dignard
Suzanne Dixon
Sheryl Dominguez
Robert and Mary Donaldson
Kerry Douglas
Sarah Gager and Arthur J. DuBois
David and Livia Duffee
Constance I. DuHamel
and Carolyn B. Handler
Mary M. Dusenbury
Joseph Dwyer
Natalie Dyer
Dr. Richard Dyer, Jr.

Lisa and Lee Einbinder
Walter J. and Mary Engels
William W. Enser
Ronald Faanes, PhD
Mrs. Jano Fairservis
Peggy Farber
Philip and Gretchen Farmer
John Paul Favreau*
Ms. Margot H. Feely
Ian and Carol Feldman
Peter and Patty Findlay
Mr. Alexander Fisher
James and Elizabeth Fishman
Dr. Eugene S. Flamm*
Joe Loose, Jr. and William Fore
Milos and Martina Forman
Dr. Diane L. Fountas
Charles G. Fredette
David K. Freeman
M. E. Freeman*
Jacob E. and Katherine H. Fricker
Benno and Stephanie Friedman
Robert Friedman*
Friends of the Ansonia
Nature Center



Happy paddlers in Stratford at the end of the Source-to-Sound paddle trip.



“Assaults on the environment on a worldwide scale often appear overwhelming. To combat this frustration, we must focus on making a positive impact on our small corner of the universe. And that is where HVA comes in, and why I am honored to support an organization committed to protecting what we cannot afford to lose.”

Valerie Friedman, member since 1995



Peter Galant
Mr. and Mrs. William G. Garrison
Dr. William and Joanna Gemmell
Richard Gerszberg*
Susan Ginns
Beverly Rubman and
Mark Goldfus
Joel Goldstein
Douglas Good
Susan Grisell
Peter Grossman and
Lawrence Timmins
Frank Haines
Mr. and Mrs. Thomas Haines
Peter and Helen Haje
James R. Hamilton
Edward J. and Janis Hardy
Benjamin and Lucy Bardo Harms
Elyse Harney
Thomas W. Hartch
Harold M. and Gretchen Hastings
David Heck
Donald and Diane Hewat
James B. and Alice Hicks
Bill and Anne Holm*
Laura Black Holt
Frank Hood
Ellen and Jean-Marie Horowitz
Housatonic Fly Fishermen's Assn.
Charles R. and Anne S. Hummel
John and Maggie Humphrey
Gordon and Carole Hyatt
Allen Hyman, MD
Elliot and Roslyn Jaffe*
Jam Food Shop
Terry and Jean Jones
Nicole Kasuba
Bucky Keady*
Thomas and Kay Key
Jeffrey Kimball and
Pamela Hogan
Robert Kitchen
David and Suzanne Klausmeyer
Phyllis and Harvey Klein
Eugene and
Barbara Shattuck Kohn
Robert G. and Linda A. Kovacs
Andrew and Elizabeth Kriegman
Fran Kumin and Richard Ticktin
Alice La Prella

George Labalme, Jr.
Mr. and Mrs. Robert LaBonne
Robinson B. Lacy and
Karen Doeblin
Jon C. Lafleur
Miss Tillie Page Laird
Ed Lamkay and Arthur Novell
Joan N. Larned
Carlene Laughlin*
Rev. and Mrs. Ledlie Laughlin
Starling R. Lawrence
Charles Lay
Ronald and Jo-Ann Lee
Lenox Garden Club
Dr. Martin G. Levine
Ann H. Lilley
Mary Lincoln
Mr. and Mrs. David Lindley
Honey Sharp and David Lippman
Dorothy J. Maffei*
Michael Makes and
Esther Conolly
James H. Maloney, Esquire
James D. Manning
Dr. Paula Marcus
Phil and Susan Markert
Robert C. Marshall
Skip and Lyn Mattoon
Patricia McGovern and
David Behrens
Thomas A. J. McGowan
Betsey McKearnan
Christine McLaughlin
Arlene McMullin
Mike McTeigue
Hans-Joerg Meili
Dr. Faith A. Menken
Drs. Fred and Andrea Mensch
Mrs. Georgianna L. Middlebrook
James and Catherine Miller
John M. Mills, Jr.
Margaret Miner
Timothy and Nancy Minkler
Jennifer and Neil Mitchell
Craig and Laurie Norton Moffatt
John and Marilyn Moller
Jeff and Molly Morgan*
Dr. Quentin M. and
Susan T. Murphy
Cynthia Newby and Jan Napier

Robert E. and Janet Nickson
Northville Market
Bart Ogden
Mr. Jonathan Opdyke
Orange Land Trust
Gerald O'Reilly
Eliot Osborn and
Louise Lindenmeyer
Andrew and Annelise Osborne
Lawrence and Carol O'Toole
Harold E. Pennington
Lee H. Perlman and
Linda S. Riefberg
Michael T. and
Judy Hanna Peschel
Mark M. Peterson
Steven and Diane Peterson
Judith Petrovich and
Philip Grausman



“Rivers and streams are some of our most vital natural resources as they provide drinking water as well as important habitat and flood control. Yet our history with our water resources seems to be one of abuse. I decided that the most meaningful purpose of my education and career would be to learn how to protect and restore these ecosystems on which we depend.”

— Aaron Hume
River Steward

Jane Poehler
Pomperaug River Watershed
Coalition
Bridget Potter
Hector P. and Erica Prud'homme
Lucia Pucciarelli-Walsh
Robert V. and Ellen Skaff Re
John M. Reimnitz
David L. Resnick and
Catherine M. Klema
Clyde J. Richardson
Gordon and Jayne Ridgway*
Ellen Rittman
Brian Roach
Clarence L. and Frances Roberts
John S. Roegge*
Stephen Root
Marc Rosen and Susan Pinsky
Joseph and Jennifer Ruggiero
Jamie Russ*
Pat Saling
James and Julia Samartini
Dr. and Mrs. Jeet Sandhu
Ralph W. and Sandra Sandmeyer
John Sanzo
Dr. Wynn and Elizabeth Sayman
George B. and Kay Schaller
Dr. John R. and
Rebecca Schreiber
Frederick Schroeder
Mrs. Marvin Schwartz
John F. and Julia Scott
Ann Seregi
Ken and Gwynne Seufert
Steve and Amy Shapiro
James and Jill Sheffield
Lee Sheldon
Shelton Conservation
Commission
Susan and Judd Shoal
David and Robin Singer
Cameron Smith*
Christopher and Marlene Smith
George T. Smith
Michael and Joan Spero
John and Elizabeth Sprague
John H. Staub
Ed Stein
Joseph N. and Marianne Stineman
Robert Strassler

Mr. Alan Surman
Peter and Barbara Talbot*
Linda Tally and Jeff Schaengold
Janet F. Taylor
Robert and Rebecca Thomas
Weston and Karen Thorn*
Mr. and Mrs. Jerry Tobin
Anne P. Todd
Robin Tost
Michael D. Trapp
Gay Tucker
Shari and Jonathan Turell
James S. and Kathrine Vick*
John Villios and Nancy Kriegel
Rita G. Vitalis
Kathleen and Michael Voldstad
James Wade and Elizabeth Wade
Janet Wade
Carolyn and Edward Wagner
Alexandra Walcott
J. Randy Walker
Cynthia F. Walsh
Donald J. Ward, Jr.
Arete Warren
John and Liza Olsen Waters
Malcolm and Donna Wattman
Wendy Weinberg
Marc and Rita Weingarten
Jay and Susan Weintraub
David Welch
Lynn Werner and Kevin Honan
White Hollow Farms, Inc.
Lisa Kimmel White
Mr. Bruce Whiteford
Maria Kelleher and
Adam Williams*
Mrs. Robert D. Williams
Robert G. Wilmers
David B. Wolf
Alice Wolfe
Barbara and Richard Wolkowicz
John and Mary Wood
Jeremy and Kathryn Yudkin
Richard and Lauri Zarin
Linda H. Zonana

FRIENDS

\$25 plus

Michael and Nancy Ackerman
Nicholas Adams



“We can never take for granted the beautiful environment in which we live. A few years of indifference and it can all disappear. HVA is our watchdog, educator and caretaker. Bravo!”

Abby Wells, member since 1993



Members

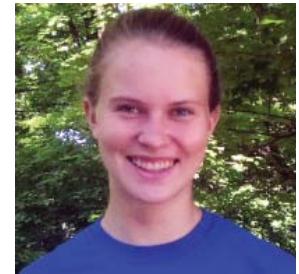
Polly Adams
Ellen Adler and Moshe Adler
Asrar and Amina Ahmed*
Barbara Allen*
Christopher Alonzo
Rick and Victoria Alterman
Karin M. Altman
Augusta and Desiree Alvarez
Ky Anderson
Edward D. Andrews
Anonymous
Lewis H. Apat*
Leon Arden
Samuel and Susan Averill
Jeff Bacon
John and Liddy Baker
Stephen R. and
Marjorie Gilman Baker*
Julia Devlin and Fred Balling
Martin Baltus
Harding Bancroft and
Eliza Klose*
Barbalunga Enterprises, Inc.
A. Richard Barber
Paul and Anne Baren
Stephanie Ann Barlow
Ann Barrett
Thomas and Arleen Barrett
Ronald Barron
Janet Barry and Barry Aquilino*
Keith Bartow
Matthew and Greata Basile
Joseph J. Baxer
Malcolm and Joan Beatty
Karen Beaumont-Biggs*
Stuart Beck and Joanne Beck*
Richard Beckerman
Meg Begley
Charles Beisser
Michael Belknap
David A. Bell
Edward S. and Rebecca Bent
Susan and Bruce Berger
Helene Berger
W. Berger
Neil and Merle Berman
Bernard Berofsky
Tim Bertaccini
Robert and Barbara Bettigole
Daniel Birger and Ellen Glass

George and Nancy Bissell
James and Virginia Blacketter
Ginni Block*
Pamela Bloodworth*
Russ and Tracy Bodnar
Gregory and Joy Bollard
Sebastian Bonner
Robert Bookman*
Martin Bookspan
Carter and Sally Booth
Anonymous
Wendy Boroski
Nelson Botwinick
Anne Bowen
Benjamin Boyar
John and Jane Boyer
Bert Boyson
Maureen A. Brady
Elaine Brandon
Sarah and Edward Brash
Anita Brean
Jeremy Brecher
Dermott M. and Sue Breen
Elaine and Charlie Brenner
Andrew and Pamela Breslin
Joyce G. Briggs
John Broadbin*
Barbara Austin Brown
Jean Brown and Jeffrey Liebowitz
Joshua Brown
Louise and Malcolm Brown
Alice Browne
Bob and Joan Buccino
Teresa F. Buchan
Cecilia Buck-Taylor
Bulls Bridge Body Shop
John and Portia Buquicchio
Thaddeus E. and Mary-Ann Burr
Linda Busch
Nancy Bushnell and
Victor Reiling
Carmella Buttacavoli*
Jeanette Byers
Timothy Cage and Eric Nelson
Matthew Cain*
Irene Caligan
Peter Canby and Anne Putnam
Mark and Jane Capecelatro
Lynn and Mike Carano
Carmen and David Carlson
Charlotte Carlson*

Clay and Karolene Carlson
Eric and Patricia Carlson*
Michael Caroe
Edward and Joanna Carpenter
Williston and Patricia Case
Roger and Heather Chace
Gene and Jeanette Chague
Eric and Lisa Chamberlain
Michael and Sara Chelminski
Glen Cherry
Joseph and Evelyn Chiarito
Katherine P. Chilcoat
Hope Childs
Anthony Chiodo
Lee Ellen Chontos
Brian Christaldi*
Sharon and Todd Cipolla*
Chris Clapper
William P. Clark
Maggie Clarke
Conrad Clewell*
David Clough*
Pat and Paul Coates
Thomas W. and Nioma Coen
Peter Coffeen
Margaret Cogswell
Marc Cohen and Emily Mekler
Connie Cohrt and
Rev. Deacon Amy Reichman
Jay Coles
ColibriMHB Translation
Services
Kenneth and Claire Collier
K. Lee and Barbara Collins
Karen Compton*
Theresa W. Conroy
Frank A. Consolati
Jim and Karen Consolati
Gildo Consolini
Sarah E. Cook*
Susan M. Cook
Margaret Cooley
Michael Cooney
Victor S. Coppleson and
Linda B. Coppleson
Eugene and Adeline Coppola
Spedito and Josephine Costa
Kerry and Bonnie Couchman
Roger and Mary Coutant
Dana B. Cowin

Kathy Creighton
Thomas and Mieke Crider
Judith Crouch
Richard and Rebekah Crouch
Edward and Barbara Currie
Jane Curtin and Patrick Lynch
Denis L. and Barbara J. Curtiss
Linda J. Cysz
William and Suzan Dahl
Stuart and Zoe Dalheim
Dark Entry Forest, Inc.
Mr. Gordon F. Darling
Mr. Dennis Daugherty
Edward T. Davis IV and
Susan Z. Leff
Nancy and David Deakin
Ralph and Lucille Decelles
Michael and Marilyn Dee*
Frank DeFino and Terri DeFino
Paul J. Delasco
Lionel and Judith Delevingne*
Nancy Dellert*
Rick and Barb DelPrete
Carmela DeLuca
Peter and Dale Demy
Herb Dershowitz and
Liane Montesa
Paul and Nicole Desrosiers
William Devlin
Clayton Dilts
Kate Dimancescu
James and Donna DiMartino*
Alexandra and Anthony
DiPentima
Dr. Richard D. Dixon
Joseph C. Doboszynski
Rosemarie and Frank Dolson
Richard and Lisa Donovan
Jerry and Gretchen Doolittle
Norman Dorsen*
John Downie
Victoria Ann Doyle
Walter J. Drozeck
Laura Dubester and
Alan Silverstein*
David and Melissa Duda
James Duffy
Inge Dunham
Helen Durgy
John and Yvonne Dutton

Tom Dwyer
Gary L. Dycus
William and Pauline Dyer
The Dzenutis Family
Mary Dzenutis
Dr. and Mrs. T. Donald Eisenstein



“The River Steward Internship with HVA has really opened my eyes to watersheds and how they operate. Through assessing culverts and streams I have become more aware of all the human and non-human impacts on watersheds. Now I find that I notice culverts and impacts on rivers everywhere I go.

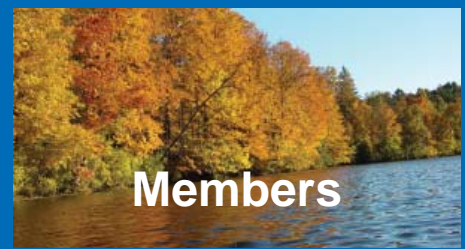
— Caroline Hilli
River Steward

Christine Elia and Eric Simon
Bradford H. Elker
Cia Elkin
Susan Elliott*
David and Bonner Elwell
Diana and John Engel
Barbara Ensign
Kenneth J. Erdmann
Joan Ermish
Gerard Esposito and
Andrea Dubrow
James F. Evans
George and Lorraine Faison



“The new boat ramp in Stockbridge is beautiful! We were the first to use it! The Housatonic is so worth preserving ... for centuries. A paddle here is extraordinary, enriching. It’s the best experience in the world. In many places on the river there’s no sign of human impact or habitation. It’s like it was when Emerson and Thoreau were here.”

Richard & Carol Seltzer, members since 1994



Members

Kristina Fares*
Tom and Connor Farley
Dan and Tricia Farley-Bouvier
Zahra Fazeli
Stephanie Fenwick*
Milton and Marian Ferguson
Robert Fiengo and
Barbara Bevington
Spencer Finch
Dr. Jack and Joyce Finkelstein
Dr. Robert W. Finley, III
Stuart Firestein*
Len Fishman and
Susan O. Schnur*
John Fitzgerald
Robert M. and
Jeanne M. FitzGerald
Laura Salas Flores
Founders Insurance Group, Inc.
Susan G. Fox
A. King Francis
Paul and Linda Frank
Dr. Carol Franken
Louise Frankenberg
Ingrid Freidenbergs
Jack and Sandy French*
Katherine Freygang
Stephen Friedberg
Edith Frieder
Austin Frye
Vincent Galano
Jacek M. and Coby Galazka
Joseph A. and Donna M. Gallucci
Dr. John W. and Jean H. Gallup
Dr. John and Ann Galt
Robert and Kathy Gambino
Doris Ganong
Alfred and Kathleen Garofolo*
Richard Genova and
Pamela Friedman
Alan and Janice Gentile
Joseph and Phyllis Geraghty
Gordon H. Gertsen
Sarah Getz and James LaPorta
Anne Ghitman*
James and Virginia Giddens
Alison Gilchrist
John and Elsie Gilligan*
R. Ginzel
Mr. and Mrs. Martin Glendon

Gerald and Cathy Gollub
Willard and Vivian Gombert
Carol and James Goodfriend*
Dr. Garett Gordon
Michael and Kathie Gordon
Drs. Richard Gottlieb and
Josephine Wright
Doug Goudey
Carol F. Gourley
Douglas S. T. Green, M.D. and
Kathryn Ruth Hellstrom Green*
David G. Greene*
Dr. Richard A. Greene
Shirley C. Greenfield
Robert E. and Patricia Groeschner
Louise Gross
Martin Grossman
Robin and Virginia Grossman
Harold Gurnee
Damian and Jeanne Gutierrez*
Michael and Kim Guy
Clyde and Beverly Haberman
Bob Hagadorn
Michael H. Hainsselin
Paul E. Hale
Robbin Halfnight*
Harry Hall
Mark and Jane Hanley and Family
Chris and Carol Hardy-Fants*
John Hartje and Carol Camper
Thomas and Anne Hartnett
Craig L. Haurand
Ken Hawley
Elizabeth Haxo
Nicholas L. Hayes, Jr.*
John Hazard
Lesley and Philip Heimlich*
Michael Heller
Elizabeth and Jerome Hellman
Ernest and Elsie Helmke
Lynne and Jose Henriquez
James and Lynn Herbert
Caroline Herrick
George Hertag
Drs. George and Jill Hetson
Michael Hickerson*
John C. Hicks
Stuart and Susanne Hirshfield
Herbert L. Hochberg
Peter and Phyllis Hofman

Theodore C. and
Barbara Hollander
Margaret Hornick
Peter and Louisa Horth
Michael Howard
Barbara and Duncan Hoxworth
David J. Hubbard
Peter and Lucille Insalaco
Kevin Ireton and Cynthia Battista
Susan Irwin
Carolyn B. Ivanoff
Paul and Rita Iverson
Alfred and Joann Ivry
Maura Jabbonsky
Jim Jacobs
Rocco Jacouzzi
Ronald and Adriana Janis
Dr. Raymond and
Karen E. Janowich
Josie Janssen
Joan Jejer
Wayne Jenkins
Gerald and Beverly Johnson*
Eric and Elizabeth Jones
Sheila Josephson
Rick and Bonnie Kaeser
Ruth G. Kahn
Nina Kaletsch
Peter and Nancy B. Kalmes
Dr. John and Anita Kane
Walter R. Kane
Lorraine Kapinos
Vivian E. Kasen
Carol Kastendieck
Donald and Susan Katz*
Rima Katz
Robert and Linda Katz
Susan Kaufman
Lynn S. Kearcher and Carl Chaiet
John A. Keefe
Dennis and Elizabeth Keenan
Paul Kellman
John Kellogg
James Kelly
Kenneth E. Kelly
Mrs. Wilbur H. Kempe
Olga Kennedy
Mark and Jackie Kettunen
Alice J. King and Thomas E. King
Larry S. King



“I liked scooping up and identifying the aquatic insects. Besides being fun, it made me more aware of how important it is to keep our streams clean for them ... for trout, wildlife and people, too! I’m so glad I had this opportunity.”

— Digby Barrios
Danbury High
School Student
*Still River Watershed
Connections*

Louise W. King
Susanne King and Richard Berlin
Gil Klein
Philip D. Knowles
Thomas Koelle
June M. Kostick
Judith Kriegl and Jerrilynn Tiso
Gerd L. Kristeller
James Krivonick
Sharon Daniel Kroeger
Jacqueline H. Kuhn
Peter Kukresh and Bonnie Sears
Harold Kuplesky
Dr. David and Denise Kurish
Phil and Carol Laban
Noel Labat-Comess
Elaine E. LaBella and
Ann Sherwood
Dr. Norman and Susan Ladov
Louisa Mattoon LaFontan

Daniel Lake
Cary and Elizabeth Lakenbach
Carol A. Lancaster*
Laura Lane and David R. Devoe
Bruce and Janie Larson
Edwin J. and Ruth Larson
Richard and Diana Larson
Regine Laverge-Schade
Christopher Lawrence
Dr. Robert K. Lee
Robert B. Lee, M. D.
Dr. Cavin Leeman and
Diane L. Zimmerman
Elias and Kathleen Lefferman
Cheryl Lein
Dan Leonard
Msgr. Thomas P. Leonard
Jerry Levy
Mr. Richard M. Levich
Dr. and Howard and Judith Levin
Sydney and Judith Levine
Harold and Jeanette Levy
Richard and Leslie Lillian Levy
Ross Levy, M.D.
Marilyn Loeff
McAdory and Marilyn Lipscomb
Mr. Craig A. Liska
Laurie Lisle
Robert S. Ljungquist
E. Lock and F. Sears
John and Susan Logan
Wallace Loman*
Henry L. and Mary Long
Russ and Mimi Longyear
James Looney
Mark A. Lowe
Dr. Richard and Mary Loyer
Karen M. Lrhazi*
Mrs. William Luers
Michael D. and Alice Lynch*
William and Kathy Lyon
Bruce and Joan MacFarlane
Robert and Sue MacVeety*
Louis J. Maggio, M.D.
Jean-Paul and Betty Lou Mandler
Mark E. Manville
Susan Margolin
Robert Marsden*
Lona Martin
Oscar Martinez



“HVA is our most important voice for river issues and its leadership in regional conservation is priceless! I would not want to see what Litchfield County would look like without HVA.”

Curtis Rand, First Selectman, Salisbury, Conn.



Members

Nancy Mascio
Millicent Matland
Medora A. Matson
James H. Maxymillian
Harold and Marie McCarthy
James and Helen McCarthy
Lee McClelland
Katherine R. McCurdy
Ralph McDermid
William W. McGhee
William and Phyllis McGoldrick
James and Mary Ellen McMellon
James and Diane McNulty
Linn Mehta and Katherine Cary
Mr. and Mrs. Joel H. Meisel
John and Carol Messerschmitt
Nancy Metcalf
Steven Miano and
 Roseann Mistretta
Miller-Ward Funeral Home
Dwight D. Miller
Gloria Miller and Macey Levin
John L. Miller
Joseph J. Miller*
Michael G. and Nancy Miller
Michael A. Miller
Dr. Rodman Miller and Family
Mrs. Victor Mills
Susan A. Mingione
Albert Misiewicz, Jr. and
 Nicole Cignoli
Margaret Black Mitchell
Col. (R) Kevin Moore
William B. and Sheila L. Moore
Geoffrey and Martha Morris
Elizabeth Morrison
William Morrison
Jane and Charles Morrow*
Rene and Annette Moser
Mary Motasky
Robert R. Mott
Pat Mulberry
Robert B. Muller, Sr.
Wendy Murphy
Charles Murray
Raymond B. and Holly S. Murray
Scott and Karen Murray
Lynn and James Mylock, Jr.*
Michele Levin Naidich
Richard Nannarello*

Alex and Judith Nardacci
Robert L. Nason and Lisa Sloane
Phyllis Nauts
Harold and Joan Nelson
Perry and Laura Neminski
Alexander Neubauer and
 April Stevens
Myron and Carolyn Neugeboren
Thomas and Susan Neumann
Suzanne B. Newell*
Doreen B. Newton*
Rob and Nell Nicholas
Dan and Sue Nichols
Nancy A. Nichols
R. J. Nickerson
Carolyn Noble and
 John Morrissey
Karen Noble
Mrs. Robert P. Noble
Margaret Nock
James and Anne Marie Noel
Stephen and Mary Norris
Jean Nutini
Christopher Nye
Ann Oberkirch, M.D.
John C. O'Brien
Kristin O'Connor
John Oddy
Angel Olmeta
Ron and Barbara Olson
Adam Orsi
Charles and Ann Orsillo
Edward Oshrin and
 Ying Li-Oshrin
John and Della Ostendorf
James Overmyer and
 Ellen Weiden
Oxford Land Trust, Inc.
Richard and Lois Pace
Robert J. Pallone
Nickitas F. and
 Penelope Panayotou
Alan Papscon
Margaret Parish
Priscilla and Asher Pavel
Mildred Pawlak
John and Susan Payne
Peter and Pat Pearce
Philip Pechukas
Mr. and Mrs. Edward F. Peltier



Otto Penzler
Dr. Richard and Evelyn Perera
John and Shirley Perotti
Carl D. and Odessa Peterson
Margaret Mary Pezzolo
John Phelan
Arnold Phillips*
John and Mary Philpott
Janet Pickering
Judith Pinkerton and
 Alan Tikotsky
Richard Pinner
David Pitofsky*
John and Jane Pittari
Ernest J. and Michele Pizzuto
Drs. Eric Plakun and
 Deborah Buccino
Richard Pomerantz
Linda A. Pope*
Juliet Popper and Derek Sisco*
Robert and Virginia Potter
Bruce and Margaret Powell
Jeffrey and Sharon Prager
David Pravda*
Allan and Jackie Prialux
Dale B. Prindle
Elsie Puglisi
Henry and Anne Putzel
Michael R. Quenneville and
 Michael K. Quenneville

Stuart and Stacey Rabinowitz
John E. Rafferty
Keith and Marie Raftery
Carol and Larry Rand*
Patricia Ranson
Melissa Rathburn
Curtis Read
Peter L. Reid
Mrs. William H. Reid
Sanders and Martha J. Reina*
Paul and Judy Reisman
Barbara Reynolds
Craig and Christine Reynolds
Cristin and David Rich
Beth and Tom Rickart
Robin and Catherine Ringler
Dr. George and Kathryn Ritter
Edward Rizzi
Stephen Robertson
Jean Robinson and
 Dawn MacNutt
Scott and Joan Robinson
Jeanne B. Robison
Alma Roginel
John and Jackie Rorke
Guy A. Rosato
Dr. Henry and Cheryl Rose
Steven and Christina Rosen
Donald and Helen Ross
Wesley and Suzanne Ross
Peter O. Rostenberg, M.D.
Harvey and Barbara Rothenberg
Edward G. Rothstein
Ruth Charny Rotko
Vlada Rousseff
Ken and Alane Rubel*
Rocco and Mary Ruggiero
Colter Rule
Peter Rzasa
Stephen and Susan Saccardi
Marjorie Safran
Thomas Sagendorph
Jane Salata and Richard Hayes
Mauricio Salazar
Donna Sammarino
Alan and Pamela Sandstrom
Alexander and Sylvie Sankowski*
Marian Conway Santoli
Robert Satow, Ph.D.*
Melissa Savage and Gladys Lewis

Susan Sayle
Rolf Schenkel
David Schiff*
Larry and Marietta Schiff
Tom and Jacque Schiller*
Dr. Philip and Hannah Schorr
Robert Schroter
Martin and Jane Schwartz
Walter Schwarz and
 Linda Swenson*
Harriet Schweitzer
Andrea Scott and Rob Jenter
John Sculley*
The Sebranek Family
Nick Sedelink
Seekonk Veterinary Hospital
Frederick R. and Arleen Sell
Daniel and Nell Semel
Gerry Senseney*
John A. Setaro
Catherine Setterlin
Sharon Optical
Sharon Veterinary Clinic
James and Susan Shehan
Shelton Land Conservation
 Trust, Inc.
Molly Shifrin and Toni Thomas
Mr. and Mrs. George Shippey
Dr. Michael and Jean Shirley
Mark and Charlene Showalter*
Priscilla Shurick
Betty Silbert*
Donna Silbert
Leonard and Gail Silverman
Karla Simon*
Ellery W. and
 Mary Lusanna Sinclair
Vicky Singer*
Rev. Peter Skaller
Jim and Dana Slaughter
Robert and Renee' Slonaker
Elizabeth Slotnick
Georgene Smith*
Mark J. Smith
Mrs. Mason Smith
Philip and Kathleen Smith
Donn and Suzanne
 Smith-Castonguay
Harvey Snitiker
Alfred Socolow



“Through Still River Watershed Connections this summer I learned all about the different invasive species that are affecting our watershed and how the river is affected by daily activities that negatively impact the Housatonic. I learned there’s so much I can do!”

Joseph Dobbins, Summer Youth Employment Program
Project Director at Danbury Youth Services



Members

Dominick and Arlene Sorrentino
Southbury Planning Commission
Jos Spelbos
Jack Spencer
L. P. Sperry, Jr.
Richard Spoor and
Dr. Franck de Chambeau
Eva M. St. John
Thomas and Kathlyn Stanley*
William V. and Janice K. Steers
David Steinberger
Sylvia G. Steucek and
Rosemary Dziubinski
Missy Stevens
Anne Stewart-Fitz Roy
Stockbridge Gas Co., Inc.
Lynn Stonebridge
Eric Stones
Richard and Holly Stover
Richard and Betty Stratton
Joe and Betsy Strauch
Gregory and
Holly Miller Sullivan
Paul and Lenore Sundberg
Charlotte Sutherland
Virginia Bush Suttman
Carol Swanson
Trudy Swenson and
Robert McKinna
Deborah H. Swigart
Kurt Syer
Joan S. Tait
Frances Taliaferro*
Karen and Frank Tansey
Imkje Mathilde Tarazi
Alex Taylor
Jean C. Taylor
Jack and Janet Teich
Marcel and Mildred Tenenbaum
Philip Terni
Kenneth Terry*
Edgar and Leona Thomas
Wesley E. Thornton
Judith Timm*
Bill and Sharon Tingley
Richard and JoanToder
Christopher and Sandra Tokarz
David S. Torrey and
Shelley E. Harms
C. Joseph and Cheryl Tracy

Mr. and Mrs. Peter Traub
Tom Trautwein and Family
William and Nancy Travis*
Leigh Tunick
Thomas J. Turek, DMD
J. Wyatt and Sandra Uhlein
Roger Ullman
Sally Underwood Miller
Dr. Ramon and
Adriana Valderama
Jo Valens
Mrs. William Vaun
Loet and Edith Velmans
Eugene and Victoria Vessell
Peter Viale
Bill Voldstad
Henry and Eva Von Ancken
Jeff Waingrow
John Walsh
Gregory and Christine Ward
Ward’s Nursery
Washington Food Market
Russel and Genie Watsky
Stephen and Dorothy Weber
Ladd Weinberg
Jamie Weisberg*



Christine Baranski charms the auction crowd singing to Diane von Furstenberg!

E.J. Weldon
Christina Wellenkamp
Crosby Wells
Lynton A. Wells
Leni Welte
Dr. John C. Whitsell II
John G. and Marilyn Wightman
Robert G. Wilbur
William O. and Jerri Wiley
Martha Wilkie*
Marcia Wilkins
Claire E. Williams*
Joan T. and Peter C. Williams
Mr. Robert Williams
Alton and Janet Wilson
Andrew Wilson
Valerie J. Winig*
Matthew and Alicia Winter
Stuart and Patrizia Wurtzel
Yuiko Yampolsky
Claudine Yannoni
Ron Yaple
Mrs. Thornburgh Zay
Virginia F. Zic
Martha and Murray Zimiles
Donald T. Zukowski
Dr. Natalia Zunino
The Zuraw Family
*New member

Charles Downing Lay Society Bequests and Planned Gifts

Judy Black**
Nancy S. Bushnell
Leendert T. DeJong
Mary V. Flynn**
Valerie Friedman
Judith Seaton Gates**
Lawrence Gates**
J. Richard Hackman**
Mary Mallory Hadlow**
Reidar N. Jespersen**
William J. Kugeman**
Elaine E. LaBella
Charles Downing Lay**
George C. Lay**
Chauncey C. Loomis, Jr.**
Ecton and Betsy Manning
Claire Murphy**
James A. Newman**

Edward R. Peckerman**
Kirsten Peckerman
John F. Ready**
L. George Rieger
Richard C. Sears
Harmon D. Smith
Marc** and Janet Taylor
Lynn A. Werner
F. Anthony and Sally Zunino
**deceased



Gifts Honoring Others

*In honor of Paul L. and
Terese Abbott*
Donald and Elizabeth Abbott

In honor of Ilene Asner
Johanna Cox
Davis Kalvar
James Harmon
Kenneth Grief

*In honor of
Susan Bishop-Wrabel*
Anonymous

In honor of Elaine LaBella
Linda Allard

*In honor of Richard Sears and
Brenda Singer*
John and Veronica Keller Mead
Douglas and Sarah Nadeau Nielsen
Asher and Priscilla Pavel
Betty Silbert
Joan S. Tait
Wendy Weinberg

*In memory of
Cora LaBerge Abbott*
Donald and Elizabeth Abbott

In memory of Denny Frost
Patrice Bouteiller
Edward and Audrey Ferman
Rev. Ledlie and
Roxanna Laughlin

In memory of Einar Lindholm
21st Century Fund for Housatonic
Valley Regional High School
Tim Abbott and Talya Leodari
Linda Allard
John and Donna Barron
Nancy Bushnell and
Victor Reiling
Leendert and Maryellen DeJong
David and Sandy Dolinsky
Robert and Sabine Gibson
Margaret P. Keskinen
The Leon Family
Siri Lindholm
Blaine Matthews and Family
H. M. and M. J. Parsons
Douglas R. Pelletier, Sr.
Frank M. Lochmann, Jr.
Resources Management
Corporation
RTR Technologies, Inc.
Richard Sears and Brenda Singer
Sara (Bee) Simont
Joan S. Tait
Ruth Tisi and Andrea Tisi

In memory of Mike Nichols
Robert and Susan Houlihan
Ann Lozman and Jay Harris
Marguerite Purnell
Diane von Furstenberg and
Barry Diller

And a special thank you to
all those who donated to,
attended and supported,
our “Fore the River” Golf
Tournament, Auction to
Benefit the Environment
and Source-to-Sound
Paddle Trip.

www.hvatoday.org

FINANCIAL REPORT

HOUSATONIC VALLEY ASSOCIATION, INC. AND HVA FOUNDATION, INC.

CONSOLIDATED STATEMENT OF ACTIVITIES FOR THE YEAR ENDED JUNE 30, 2016

	UNRESTRICTED	TEMPORARILY RESTRICTED	PERMANENTLY RESTRICTED	TOTAL
REVENUES, GAINS AND OTHER SUPPORT				
Membership Dues	\$ 54,710	\$ -	\$ -	\$ 54,710
Contributions Above Dues	390,514	-	-	390,514
Grants	479,221	404,627	-	883,848
Events	304,146	-	-	304,146
Fees	13,680	-	-	13,680
Rent	6,397	-	-	6,397
Donated Goods	7,500	-	-	7,500
Investment Income	6,438	24,221	-	30,659
Unrealized Gains (Losses) on Investments	5,312	5,338	-	10,650
Net Assets Released From Restrictions	329,637	(329,637)	-	-
Total Revenues, Gains and Other Support	1,597,555	104,549	-	1,702,104
 EXPENSES				
Program Services				
Issue Response	92,061	-	-	92,061
Environmental Education	247,878	-	-	247,878
Land Protection	586,431	-	-	586,431
Water Protection	339,746	-	-	339,746
Total Program Services	1,266,116	-	-	1,266,116
 Supporting Services				
Membership	71,946	-	-	71,946
Events	112,641	-	-	112,641
Management and General	25,339	-	-	25,339
Fundraising	89,653	-	-	89,653
Total Supporting Services	299,579	-	-	299,579
 Total Expenses	1,565,695	-	-	1,565,695
 Change in Net Assets	31,860	104,549	-	136,409
 Net Assets at Beginning of Year	476,436	650,222	849,025	1,975,683
 Net Assets at End of Year	\$ 508,296	\$ 754,771	\$ 849,025	\$ 2,112,092

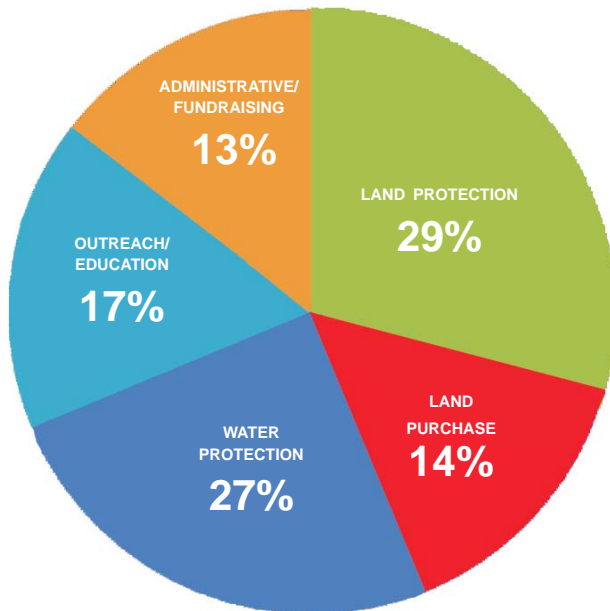
CONSOLIDATED STATEMENT OF FINANCIAL POSITION JUNE 30, 2016

ASSETS	
Current Assets	
Cash and Cash Equivalents	\$ 355,938
Accounts Receivable	228,560
Prepaid Expenses	10,121
Total Current Assets	594,619
 Property and Equipment	
Land	216,206
Buildings and Renovations	337,841
Furnishings and Equipment	190,273
Less Accumulated Depreciation	(448,651)
Net Property and Equipment	295,669
 Other Assets	
Investments	1,246,720
Deferred Land Sale Costs	6,342
Total Other Assets	1,253,062
TOTAL ASSETS	\$ 2,143,350
 TOTAL LIABILITIES AND NET ASSETS	
Current Liabilities	
Accounts Payable	\$ 21,539
Accrued Salaries and Wages	9,719
TOTAL CURRENT LIABILITIES	31,258
 Net Assets	
Unrestricted, Equity in Property and Equipment	295,669
Unrestricted, Designated by the Board	62,000
Unrestricted, Undesignated	150,627
Total Unrestricted Net Assets	508,296
Temporarily Restricted	754,771
Permanently Restricted	849,025
TOTAL NET ASSETS	2,112,092
 TOTAL LIABILITIES AND NET ASSETS	\$ 2,143,350

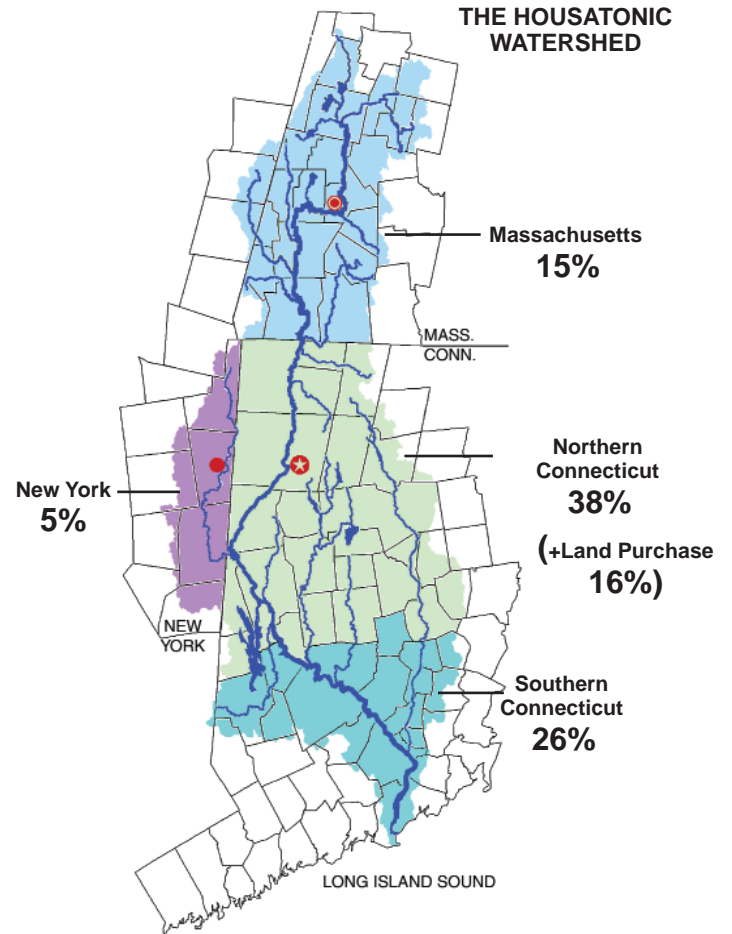
2016 AT A GLANCE

The Housatonic Valley Association's mission is to save the natural character and environmental health of our communities by protecting land and water in the Housatonic River Watershed.

How we spent our resources



Where we spent our resources



www.hvatoday.org

CT: P.O. Box 28, Cornwall Bridge, CT 06754 860-672-6678 E-mail: conn@hvatoday.org
 MA: P.O. Box 251, South Lee, MA 01260 413-394-9796 E-mail: mass@hvatoday.org
 NY: P.O. Box 315, Wassaic, NY 12592 845-879-1381 E-mail: cklocker.hva@gmail.com





Cornwall Bridge, CT 06754-0028

WITH OUR THANKS TO YOU!

NONPROFIT ORGANIZATION
U.S. POSTAGE
PAID
PERMIT NO. 124
DANBURY
CONNECTICUT
06810

HVA STAFF

Lynn Werner
Executive Director

BERKSHIRE LAND AND WATER
Dennis Regan
Berkshire Director
Alison Dixon
Berkshire Outreach Program Manager

CONNECTICUT LAND PROTECTION
Tim Abbott
Greenprint Director
Connie Manes
Greenprint Manager

CONNECTICUT/NEWYORK
WATER PROTECTION
Michael Jastremski
Watershed Conservation Director
Carolyn Klocker
*Ten Mile Watershed Manager**

Ryan Williams
Conservation Projects Manager
Savannah Judge
Conservation Technician

COMMUNITY EDUCATION AND OUTREACH
Richard Sears
Development Director
Brenda Singer
Membership/Volunteer/Auction Coordinator
Jane Bakker
*Communications Manager**

FINANCIAL
Patience Lindholm
Finance Director

CONSULTANTS
Carol Powers – Grants
Joseph Ruggiero – IT

*PARTTIME

Welcome Connie and Carolyn!



Connie Manes

Connie joined us in January as our new Greenprint Manager. She works with Greenprint Director Tim Abbott to expand the reach and impact of the land trust conservation partnership. She remains the Principal of Manes Consulting, LLC and part-time Executive Director of Kent Land Trust. In 2012 she pioneered the growing national Land Trust Alliance Circuit Rider program working with nonprofits throughout Connecticut to prepare for national accreditation. Through her work, Connie has directly represented nearly half of the Greenprint member organizations and has strong connections to them all. She is a member of the Steering Committee of the statewide Connecticut Land Conservation Council and chairs its Training and Education Committee.



Carolyn Klocker

Carolyn joined us in May as our new Ten Mile Watershed Manager. In her previous capacity as Senior Water Resource Educator at Cornell Cooperative Extension of Dutchess County, she served as a technical resource to Dutchess County's municipal officials and watershed organizations. This included working with the Wappinger Creek Watershed Intermunicipal Council to secure a New York State Inland Waterway designation for Wappinger Creek, which has unlocked new funding opportunities for planning and management in that watershed. Carolyn supports the Ten Mile River Watershed Collaborative, engaging community leaders and stakeholders in finding new ways to conserve the Ten Mile River Watershed's land and water resources. She also handles education programs with our partner organizations and community leaders, and helps implement stream restoration and management projects, water quality monitoring, and assessment of culverts and bridges.

Greenprint Collaborative

Aton Forest, Inc.
Colebrook Land Conservancy
Connecticut Farmland Trust
Cornwall Conservation Trust
Flanders Nature Center and Land Trust
The Goshen Land Trust, Inc.
Hartland Land Trust
Housatonic Valley Association
The Kent Land Trust
Lake Waramaug Task Force
Litchfield Land Trust
The Morris Land Trust
Naromi Land Trust
New Hartford Land Trust
Norfolk Land Trust
Salisbury Land Trust
Sharon Land Trust
Steep Rock Association
The Trust for Public Land
Warren Land Trust
Watertown Land Trust
Weantinoge Heritage Land Trust
The White Memorial Foundation
Winchester Land Trust