

# FINANCIAL REPORT

HOUSATONIC VALLEY ASSOCIATION, INC. AND HVA FOUNDATION, INC.

## CONSOLIDATED STATEMENT OF ACTIVITIES FOR THE YEAR ENDED JUNE 30, 2012

	UNRESTRICTED	TEMPORARILY RESTRICTED	PERMANENTLY RESTRICTED	TOTAL
<b>REVENUES, GAINS AND OTHER SUPPORT</b>				
Membership Dues	\$ 62,075	\$ -	\$ -	\$ 62,075
Contributions Above Dues	318,853	-	-	318,853
Grants	684,213	114,667	-	798,880
Events	181,149	-	-	181,149
Fees	21,604	-	-	21,604
Rent	8,779	-	-	8,779
Investment Income	3,639	20,948	-	24,587
Donated Goods and Services	4,732	-	-	4,732
Unrealized Gains on Investments	6,452	21,943	-	28,395
Net Assets Released From Restrictions	117,612	(117,612)	-	-
<b>Total Revenues, Gains and Other Support</b>	<b>1,409,108</b>	<b>39,946</b>	<b>-</b>	<b>1,449,054</b>
<b>EXPENSES</b>				
Program Services				
Watch	92,994	-	-	92,994
Geographic Information Systems	26,865	-	-	26,865
Environmental Education	260,846	-	-	260,846
Land Protection <sup>1</sup>	610,530	-	-	610,530
Water Protection	170,594	-	-	170,594
<b>Total Program Services</b>	<b>1,161,829</b>	<b>-</b>	<b>-</b>	<b>1,161,829</b>
Supporting Services				
Membership	52,662	-	-	52,662
Events	84,655	-	-	84,655
Management and General	30,239	-	-	30,239
Fundraising	79,794	-	-	79,794
<b>Total Supporting Services</b>	<b>247,350</b>	<b>-</b>	<b>-</b>	<b>247,350</b>
<b>Total Expenses</b>	<b>1,409,179</b>	<b>-</b>	<b>-</b>	<b>1,409,179</b>
<b>Change in Net Assets</b>	<b>(71)</b>	<b>39,946</b>	<b>-</b>	<b>39,875</b>
Net Assets at Beginning of Year as previously reported	488,120	144,205	899,891	1,532,216
Prior Period Adjustment <sup>2</sup>	-	54,366	(54,366)	-
Net Assets at Beginning of Year as Restated	488,120	198,571	845,525	1,532,216
Net Assets at End of Year	\$ 488,049	\$ 238,517	\$ 845,525	\$ 1,572,091

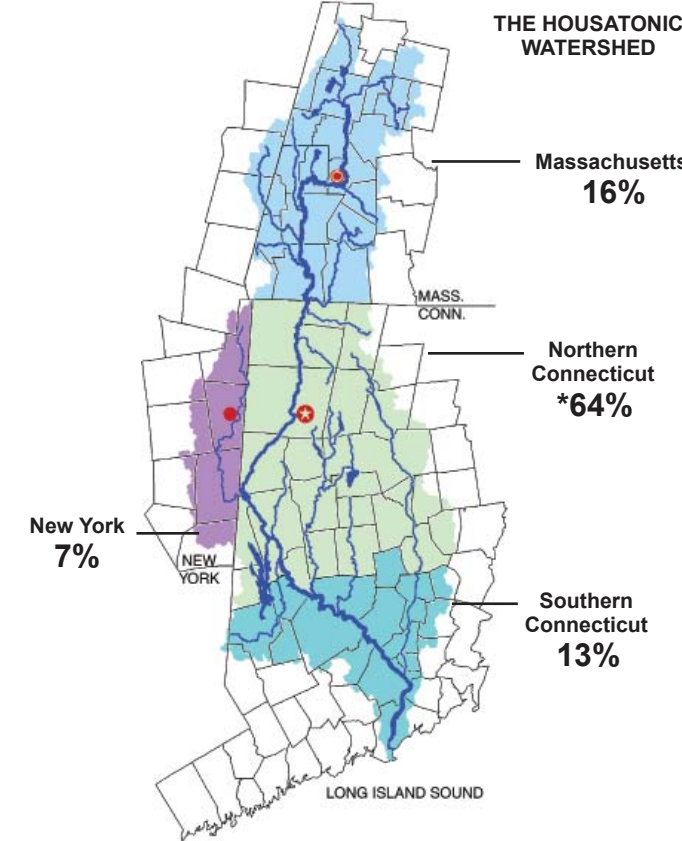
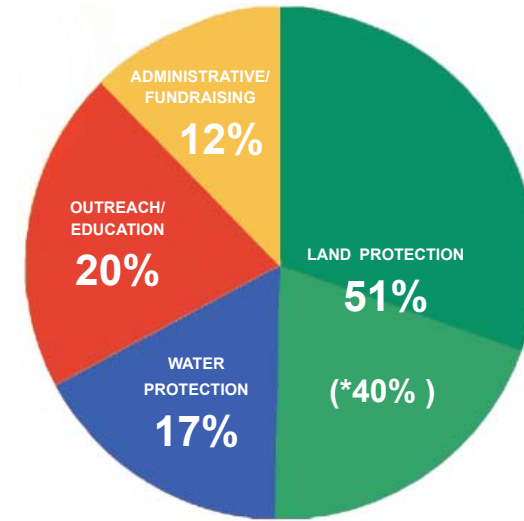
## CONSOLIDATED STATEMENT OF FINANCIAL POSITION JUNE 30, 2012

<b>ASSETS</b>	
Current Assets	
Cash and Cash Equivalents	\$ 265,396
Accounts Receivable	111,769
Prepaid Expenses	7,471
<b>Total Current Assets</b>	<b>384,636</b>
Property and Equipment	
Land	216,206
Buildings and Renovations	328,414
Furnishings and Equipment	166,848
Less Accumulated Depreciation	(390,127)
<b>Net Property and Equipment</b>	<b>321,341</b>
Other Assets	
Investments	881,362
Deferred Land Sale Costs	6,342
<b>Total Other Assets</b>	<b>887,704</b>
<b>TOTAL ASSETS</b>	<b>\$1,593,681</b>
<b>LIABILITIES AND NET ASSETS</b>	
Current Liabilities	
Accounts Payable	\$ 13,157
Accrued Salaries and Wages	7,876
Tenant's Security Deposit	557
<b>TOTAL CURRENT LIABILITIES</b>	<b>21,590</b>
Net Assets	
Unrestricted	
Unrestricted, equity in property and equipment	321,341
Unrestricted, undesignated	166,708
<b>Total Unrestricted Net Assets</b>	<b>488,049</b>
Temporarily restricted	238,517
Permanently restricted	845,525
<b>TOTAL NET ASSETS</b>	<b>1,572,091</b>
<b>TOTAL LIABILITIES AND NET ASSETS</b>	<b>\$1,593,681</b>

# 2012 AT A GLANCE

The Housatonic Valley Association's mission is to save the natural character and environmental health of our communities by protecting land and water in the Housatonic River valley.

## How we spent our resources



## Where we spent our resources

\*Reflects \$375,000 of pass-through funds for purchase of Frost Farm conservation easement.



www.hvatoday.org  
 CT: P.O. Box 28, Cornwall Bridge, CT 06754 860-672-6678 E-mail: conn@hvatoday.org  
 MA: P.O. Box 251, South Lee, MA 01260 413-394-9796 E-mail: mass@hvatoday.org  
 NY: P.O. Box 315, Wassaic, NY 12592 845-879-1381 E-mail: toniahva@hotmail.com.



Cornwall Bridge, CT 06754-0028

**HVA STAFF**  
 Lynn Werner  
*Executive Director*  
**MASSACHUSETTS**  
 Dennis Regan  
*Berkshire Program Director*  
 Alison Dixon  
*Outreach Program Manager\**  
**CONNECTICUT/LAND PROTECTION**  
 Tim Abbott  
*Greenprint Director*  
 Elaine LaBella  
*Land Protection Director*  
 Sam Dzieken  
*GIS Manager\**  
**CONNECTICUT/NEW YORK**  
**WATER PROTECTION**  
 Meghan Ruta  
*Connecticut Water Protection Director*  
 Tonia Shoumatoff  
*New York Watershed Manager\**  
 Ron Skurat  
*Southern Housatonic Watershed Coordinator\**  
**COMMUNITY EDUCATION AND OUTREACH**  
 Richard Sears  
*Development Director*  
 Jane Bakker  
*Communications Coordinator\**  
 Brenda Singer  
*Membership/Volunteer Coordinator\**  
**FINANCIAL**  
 Patience Lindholm  
*Finance Director\**  
 Carol Powers  
*Grants Consultant\**  
 Joseph Ruggiero  
*IT Specialist\**  
 \*PARTTIME

## Special Thanks to our Green Herons



David Behnke and Paul Doherty  
 Ed and Meg Hoffman  
 Barton and Debby Jones  
 Michael and Martha Nesbitt  
 Dick and Pamela Stebbins  
 Bill and Jean Vitalis



## Special Thanks to our Blue Herons



Tucker and Karen Andersen  
 Bob and Julie Bailey  
 Jack and Pam Baker  
 Marj and Bill Coleman  
 Robert Couturier  
 and Jeffrey Morgan  
 Len and Maryellen DeJong  
 Joseph and Barbara Ellis  
 Whitey and Judy Frew  
 Linda Allard Gallen  
 Lou and Elaine Hecht  
 Peter Kellogg  
 Michael and Laurence Levin  
 Roger and Fa Liddell  
 Ezra and Reeve Mager  
 Ben Nickoll  
 and Christine Armstrong  
 Barbara Page and John Liu  
 Kirsten Peckerman  
 Barclay Prindle  
 and Amy Schuchat  
 Margie Purnell  
 Anne Swift  
 Diane von Furstenberg  
 and Barry Diller  
 Tony and Sally Zunino



# HOUSATONIC VALLEY ASSOCIATION

## 2012 ANNUAL REPORT

NONPROFIT ORG.  
 U.S. POSTAGE  
**PAID**  
 PERMIT NO. 19  
 CORNWALL BRIDGE  
 CONNECTICUT



1) Reflects \$375,000 of pass-through funds for purchase of Frost Farm conservation easement.  
 2) The prior year financial statements have been restated for the correction of an error in the 2012 classification of net assets which were classified as permanently restricted but should have been reported as temporarily restricted.



## Board of Directors

*President*  
Robert P. Houlihan

*Vice Presidents*  
Shep Evans  
Ellen M. Rosenberg  
F. Anthony Zunino

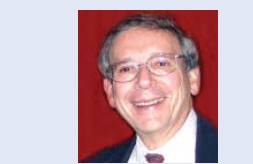
*Secretary*  
Leendert T. DeJong

*Treasurer*  
Michael M. Nesbitt

Linda Allard  
Christine Baranski  
David Behnke  
Joseph Ellis  
Barton Jones  
Einar Lindholm  
James H. Maloney  
Ecton Manning  
James S. McInerney, Jr.  
Barclay Prindle  
Richard Stebbins  
Marc Taylor\*  
Steven J. Whitman

*Honorary Member*  
Allan L. Frew  
Diane von Furstenberg

*Advisory Council*  
Robert Bailey  
David Dolinsky  
W. Paul Dooley  
Mary Flynn  
Charles Fredette  
Christopher Kukk, Ph.D.  
David Platt  
Harmon Smith  
William N. Vitalis



\*We lost Marc Taylor in the Spring of 2012. He remains forever in our hearts.

ALL PHOTOS FROM HVA FILES EXCEPT WHERE NOTED.

## TO MEMBERS AND FRIENDS

**T**his last year was a challenge for the watershed, but she held her own. On a surreal October day we watched snow accumulate on the leaves of trees followed by the sad sound of oak limbs cracking and the thud of one fallen tree after another. The winter was nearly snowless and then through Spring and Summer it just got hotter and drier by the day. This summer was one of the hottest and driest on record and yet the small tributary streams that our volunteers and River Stewards sampled managed to stay fairly healthy. Enough regular groundwater recharge occurred to sustain fresh, cold water flows – and the trout, turtles and aquatic life that depend on them.

We know that repeated drought conditions can damage these streams so our work to encourage innovative low impact development techniques is truly needed. The goal is to infiltrate, filter and store storm water close to where it hits the ground. Most important, after decades of work, we and our partners were able to establish Connecticut Stream Flow Regulations to protect both natural stream flows and vital public drinking water supplies. We are one of the first states in the nation to do so!

No sooner did we celebrate this victory than we faced the loss of our mentor and friend Dr. Marc Taylor. Marc challenged us to work together to find societal solutions to pressing environmental problems. Marc's legacy of compassion and determination will always live on here at HVA! As will our commitment to you – the heart and soul of all that we do. Thank you!



Robert P. Houlihan, President



Lynn Werner, Executive Director

Special Thanks to our Corporate Associates

Advanced Alarms and Communications, Inc.  
AJA Risk Management Consultants  
Aqua Environmental Lab  
Aquarion Water Company  
Arch Street Communications, Inc.  
Becton-Dickinson Co.  
Bennett Sullivan Associates  
Berkshire Enviro-Lab, Inc.  
Bicon Electronic Company  
Bouvier Insurance  
Bulls Bridge Body Shop  
Burns Construction Company, Inc.  
C.H. Nickerson & Co., Inc.  
CLY-DEL Manufacturing Co.  
Con Serv, Inc.  
Cramer & Anderson Law Office  
Crane & Co., Inc.  
D & P Floor Covering  
DSA Companies  
Ford's Auto Service  
Franklin G. Pilicy, P.C.  
Gaylordsville Country Store, LLC  
Price Chopper's Golub Foundation  
Harney & Sons Fine Teas  
HD Supply Waterworks  
Heritage Deli & Cafe  
Heritage Development Group, Inc.  
Herman Realty Corporation  
Industrial Paper and Plastic Products Co.  
The Interlaken Resort and Conference Center  
Iroquois Gas Transmission System  
J. J. Brennan Construction Co.  
Jam (Kennedy Foods, LLC)  
Klemm Real Estate  
Litchfield Bancorp  
Litchfield Insurance Group  
Northeast Utilities  
O & G Industries, Inc.  
O'Connor Davies Munns & Dobbins, LLP  
Old Mill Builders LLC  
Phoenix Realty Management  
Pitney Bowes  
Platt Brothers & Co.  
R.T. Facts  
Race Mt. Tree Services, Inc.  
Salisbury Bank  
Sharon Optical  
Smith & Company  
The Stone Construction Co., Inc.  
Tighe & Bond  
Ward's Nursery  
Webster Bank  
Westage Companies  
Winters Brothers Waste Systems  
Zuberry Associates



**14** places left in the watershed known to still have the rare and tiny bog turtle.



**30+** years to pass a workable stream flow protection regulation in Connecticut.

**800+** road crossings assessed for replacement by volunteers to help wildlife movement.



## FOCUS ON WATER

*You protect clean water and healthy, flowing rivers and streams.*

### Restoring stream health and habitat

- One road crossing at a time by surveying nearly 800 road culverts in the Berkshires with the Berkshire Environmental Action Team and UMASS to restore stream flow and allow fish and wildlife to pass freely – and survive.
- Sampling the health of 18 more streams in Sharon, Amenia, Cornwall, Goshen, Torrington, Warren, Washington, Morris, Bantam and Litchfield.
- Documenting conditions along Battle-swamp Brook with the Shepaug River Association to help Roxbury residents investigate stream health.
- Making history with our partners in November when Connecticut adopted one of the nation's first regulations to protect healthy stream flows *and* vital public water supplies, and pursuing similar river protections in Massachusetts with the Massachusetts Rivers Alliance. Stay tuned!
- Raising the visibility of the Naugatuck River by launching a new Web site that highlights recreation, environment and river events – [www.naugatuckriver.net](http://www.naugatuckriver.net).
- Defending bog turtle habitat in Northeast by calling on new retail development to

protect the pure local waters so critical to the survival of this tiny creature.

### Celebrating rivers

- Publishing two new Paddle Guides to the Housatonic River – an updated guide for the River in Berkshire County and a brand new companion guide for the River in Connecticut!
- Inspiring the next generation of environmental leaders through our work with the Museum Institute for Teaching Science to help educators teach river dynamics; our Pittsfield Summer Playground Program for children; our 40-plus elementary and middle school programs; guided family river paddles; collaborating with Artwell Gallery on the year-long Housy River Fest of art workshops; and with Education Connection and the Pomperaug River Watershed Coalition to teach high school students about climate change impacts on rivers and Long Island Sound.

**At year's end**, we were exploring nutrient reduction strategies with Friends of the Lake and preparing to evaluate new PCB cleanup plans for the Housatonic River south of Pittsfield.

Special Thanks to our Project Sponsors

Donald and Elizabeth Abbott  
Paul and Terese Abbott  
Bernard R. Adams  
and Edna H. Travis  
AKC Fund, Inc.  
Anonymous  
The Asen Foundation  
Aton Forest, Inc.  
Berkshire Life,  
a Guardian Company  
Berkshire Taconic Community  
Foundation  
Big Y Food, Inc.  
The Bok Family Foundation  
Kevin Case  
Dennis and Pamela Collins  
Commonwealth of Massachusetts  
Community Foundation of  
Northwest Connecticut  
Connecticut Community  
Foundation  
Connecticut Farmland Trust  
The Connecticut Light  
and Power Company  
Cornwall Conservation Trust  
Cornwall Foundation  
Crane & Co., Inc.  
Crystal Rock  
David L. Klein Jr. Foundation  
Dr. Robert C. and  
Tina Sohn Foundation  
Education Connection  
Fields Pond Foundation, Inc.  
FirstLight Power Resources  
Flanders Nature Center, Inc.  
Geoffrey C. Hughes  
Foundation, Inc.  
Goshen Land Trust  
Hartland Land Trust  
Louis and Elaine Hecht  
Iroquois Gas Transmission System  
Jeniam Foundation  
Jessie B. Cox Charitable  
Lead Trust  
Barton and Debby Jones  
Marge Josephson  
Kent Land Trust  
Lake Waramaug Task Force  
Land Trust Alliance  
Lee Bank  
Litchfield Land Trust, Inc.  
Massachusetts Audubon Society  
Massachusetts  
Environmental Trust



## FOCUS ON LAND

*You conserve forests, meadows and special places for today ... and tomorrow.*

### Conserving land and greenways

- Preserving 20 acres of the Housatonic Riverfront Frost Farm in Sharon with the Sharon Land Trust – another link in the Housatonic River Greenway!
- Conserving 800 acres of Northeast Utilities-owned lands in the river valley – 723 acres in Sharon/Kent and 57 acres in Newtown – with partner groups, state agencies and NU, and extending the NU/ Connecticut Department of Energy and Environmental Protection agreement to give conservationists the first option to buy NU lands of conservation importance.
- Providing bus tours of the Naugatuck River Valley to help the 14-town region gain National Heritage status.
- Planning a Housatonic bike trail with the Upper Housatonic Valley National Heritage Area, the NW Connecticut Conservation District and town leaders from New Milford to the Massachusetts border.

### Greenprinting the Litchfield Hills

- Supporting new landscape conservation initiatives with the 23 member land trusts of the Litchfield Hills Greenprint Collaborative in the Aspetuck Watershed, the Taconic

Highlands and the Greater Litchfield region.

- Advancing plans to conserve 311 acres in Norfolk with the Norfolk Land Trust, Connecticut Department of Energy and Environmental Protection and the Highlands Conservation Act.

### Protecting fragile natural areas

- Pursuing environmental protections with Cricket Valley's Natural Gas Power Plant proposal in Dover Plains including low impact development to protect sensitive wetlands, installation of a stream gauge to monitor flow and water quality and the conservation of nearly 80 acres on site.
- Hosting a Green Infrastructure Conference in Millerton that inspired a new Village Conservation Advisory Committee.
- Helping 10 towns from Brookfield to Shelton and Ansonia explore low impact development land-use strategies.

**By year's end**, we were launching a new website to share Greenprint strategies, data, and maps – [www.litchfieldgreenprint.org](http://www.litchfieldgreenprint.org); exploring a new riverfront footpath in Cornwall; and promoting the Naugatuck River Greenway with the National Park Service.

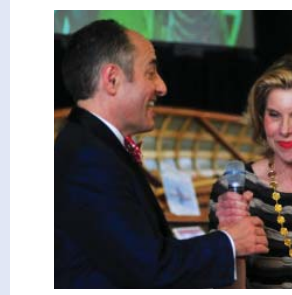
Special Thanks to our Project Sponsors

McKellan Group  
Middlebury Land Trust, Inc.  
Millone & MacBroom, Inc.  
MITS, Inc.  
Morris Land Trust  
Naromi Land Trust, Inc.  
National Audubon Society, Inc.  
National Fish and Wildlife  
Foundation  
New Hartford Land Trust  
The Norcross Wildlife  
Foundation, Inc.  
Norfolk Land Trust  
Barbara Page and John Liu  
Pawling Engineered  
Products, Inc.  
The Peter and Carmen Lucia  
Buck Foundation, Inc.  
Hector and Erica Prud'homme  
Republican American  
Rivers Alliance of  
Connecticut, Inc.  
Rotary Club of New Milford  
Salisbury Association, Inc.  
Bruce Schnitzer  
Sharon Land Trust  
Shepaug River Association  
Sikorsky Aircraft, Div. UTC  
Steep Rock Association, Inc.  
The Trust for Public Land  
U.S. Fish and Wildlife Service  
Union Savings Bank  
Upper Housatonic Valley  
National Heritage Area  
The Valley Community  
Foundation  
Michael Victor  
Eliot and Annick Wadsworth  
Warren Land Trust, Inc.  
Watertown Land Trust  
Weantinog Heritage, Inc.  
Lynn Werner  
The Werth Family Foundation  
Western Massachusetts  
Electric Co.  
White Memorial Foundation  
F. Anthony and Sally Auer Zunino



DUANE RAVER USFWS

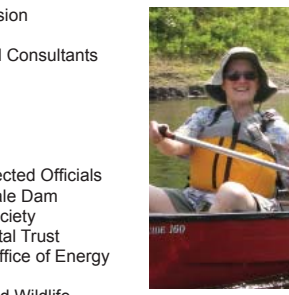
## THANKS TO YOU AND OUR PARTNERS



Alternative Support Program, Pittsfield School System  
Artwell Gallery, Inc.  
Berkshire Environmental Action Team  
Berkshire Natural Resources Council  
Borough of Naugatuck  
Canaan Inland Wetlands Commission  
Candlewood Lake Authority  
Cary Institute of Ecosystem Studies  
City of Ansonia  
City of Danbury  
City of Derby  
City of Pittsfield  
City of Torrington  
City of Waterbury  
Connecticut BASS Federation Nation  
Connecticut Chapter, AMC  
Connecticut Department of Energy and Environmental Protection  
Connecticut Fund for the Environment  
Conn. Department of Transportation  
Connecticut Farmland Trust  
U.S. Fish and Wildlife Service  
Union Savings Bank  
Upper Housatonic Valley  
National Heritage Area  
The Valley Community  
Foundation  
Michael Victor  
Eliot and Annick Wadsworth  
Warren Land Trust, Inc.  
Watertown Land Trust  
Weantinog Heritage, Inc.  
Lynn Werner  
The Werth Family Foundation  
Western Massachusetts  
Electric Co.  
White Memorial Foundation  
F. Anthony and Sally Auer Zunino



Kent Conservation Commission  
Kleinschmidt Associates  
Kozuchowski Environmental Consultants  
Lake Housatonic Authority  
Lake Lillinonah Authority  
Lake Zoar Authority  
Land Trust Alliance  
Laurel Hill Association  
Litchfield Hills Council of Elected Officials  
Littleville Power Co., Glendale Dam  
Massachusetts Audubon Society  
Massachusetts Environmental Trust  
Massachusetts Executive Office of Energy and Environmental Affairs  
Massachusetts Fisheries and Wildlife  
National Oceanic Atmospheric Admin.  
National Park Service  
Naugatuck River Revival Group  
Naugatuck River Watershed Assoc.  
New Milford Recreation Association  
Newtown High School  
Newtown Planning and Zoning Commission  
New York Dept. of Environmental Cons.  
Northwest Naturalist Services  
Northwest Conn. Conservation District  
Northwest Conn. Council of Governments  
Oblong Land Conservancy  
Osher Lifelong Learning Institute



Pomfret Computer Technologies  
Princeton Hydro  
Pomperaug High School  
Pomperaug River Watershed Coalition  
Pomperaug River Watershed Association  
River Network  
Rivers Alliance of Connecticut  
Roxbury Conservation Commission  
Saint Michaels Church  
Seymour Inland Wetlands Commission  
Seymour Planning and Zoning  
Commission  
Sharon Audubon  
Shelton Economic Development Corp.  
Shelton Land Trust  
Shepaug River Association  
Sierra Club  
Sound School  
Southbury Land Trust  
Steele Brook Rangers  
Still Flowing Production Team  
Still River Alliance  
The Nature Conservancy  
Thomaston Greenway Committee  
Thule, Inc.  
Town of Beacon Falls  
Town of Cornwall  
Town of Harwinton  
Town of Lenox  
Town of Lenox  
Town of Litchfield  
Town of New Milford  
Town of Seymour  
Town of Shelton  
Town of Shelton  
Town of Stratford  
Town of Thomaston  
Town of Waterbury  
Trout Unlimited  
The Trust for Public Land  
U.S. Environmental Protection Agency  
United States Geologic Survey  
Valley Council of Governments  
Valley United Way  
Wamogo High School  
Washington Environmental Council  
Waterbury Greenway Committee  
WCSU  
Joanne Wojtusiak

### SPECIAL THANKS TO ...

**Auction guests, donors, bidders and chairs:** Christine Baranski, Diane von Furstenberg, Annette and Oscar de la Renta, Hamilton South, Robert Couturier, Nancy Novogrod, Julianna Margulies, E. Graydon Carter, Pam Baker, Dorothy Cann Hamilton and Anne Swift.

**Tournament golfers and sponsors:** Crystal Rock, Charter Business, Heritage Development Corp., FirstLight Power Resources, Northeast Utilities System, O'Connor Davies Munns & Dobbins, People's United Bank, O&G Industries, Zuberry Associates, Heritage Village Golf Course and Hospitality, Hole-in-one and Tee and Green sponsors.

**Aquarion Water Company and their partners for the Housatonic Environmental Challenge:** Burns Construction Company, Inc.; C.H. Nickerson Company, Inc.; HD Supply Waterworks; J. J. Brennan Construction Company; and Tighe & Bond